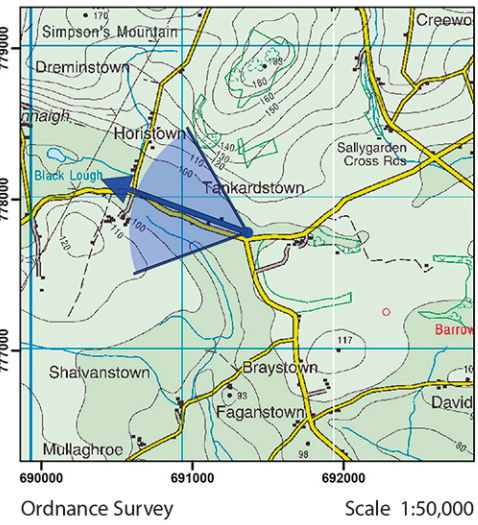


LVIA ref. VP56



Viewpoint Information

National Grid Coordinate of Viewpoint (ITM)
Easting: 691362
Northing: 777771
Elevation: 100.4 m

Turbine Information

Turbine Dimensions
Hub Height: 104 m
Blade Length: 65 m
Tip Height: 169 m

Photo Capture Information

Image Capture Information
Date: 18-Jun-14
Time: 13:04

Camera Information
Camera: Canon 5D Mark II
Lens: 50mm fixed
Focal Length: 50mm
Camera Height: 1.7 m AGL

Visibility Information

Number of Turbines (nacelles) Visible
Theoretical (wireframe): 5
Actual (montage): 2

Angle of View Occupied by Turbines
Theoretical (wireframe): 6°
Actual (montage): 2°

Distance to Nearest Turbine
Dist. to Nearest Turbine: 9.22 km
Dist. to Nearest Visible Turbine: 9.22 km

Photomontage



To view this panorama as a flat image one must move from left to right along its length whilst maintaining a perpendicular viewing direction and the specified **correct viewing distance of 50cm**. To see this entire panoramic scene in reality would necessitate turning one's head through 40 degrees.

Direction of View - Degrees from Grid North

Castletownmoor Wind Farm (Proposed)

Section of N/S Interconnector (Proposed)

Virtual Model

